

**IL31 Antibody (N-term)**  
**Affinity Purified Rabbit Polyclonal Antibody (Pab)**  
**Catalog # AP9388a****Specification**

---

**IL31 Antibody (N-term) - Product Information**

Application	WB, FC, IHC-P,E
Primary Accession	<a href="#">Q6EBC2</a>
Reactivity	Human
Host	Rabbit
Clonality	Polyclonal
Isotype	Rabbit IgG
Antigen Region	13-40

**IL31 Antibody (N-term) - Additional Information****Gene ID** 386653**Other Names**

Interleukin-31, IL-31, IL31

**Target/Specificity**

This IL31 antibody is generated from rabbits immunized with a KLH conjugated synthetic peptide between 13-40 amino acids from the N-terminal region of human IL31.

**Dilution**

WB~~1:1000

FC~~1:10~50

IHC-P~~1:50~100

E~~Use at an assay dependent concentration.

**Format**

Purified polyclonal antibody supplied in PBS with 0.09% (W/V) sodium azide. This antibody is purified through a protein A column, followed by peptide affinity purification.

**Storage**

Maintain refrigerated at 2-8°C for up to 2 weeks. For long term storage store at -20°C in small aliquots to prevent freeze-thaw cycles.

**Precautions**

IL31 Antibody (N-term) is for research use only and not for use in diagnostic or therapeutic procedures.

**IL31 Antibody (N-term) - Protein Information****Name** IL31**Function** Activates STAT3 and possibly STAT1 and STAT5 through the IL31 heterodimeric receptor

composed of IL31RA and OSMR (PubMed:[15184896](#)). May function in skin immunity (PubMed:[15184896](#)). Enhances myeloid progenitor cell survival in vitro (By similarity). Induces RETNLA and serum amyloid A protein expression in macrophages (By similarity).

#### Cellular Location

Secreted.

#### Tissue Location

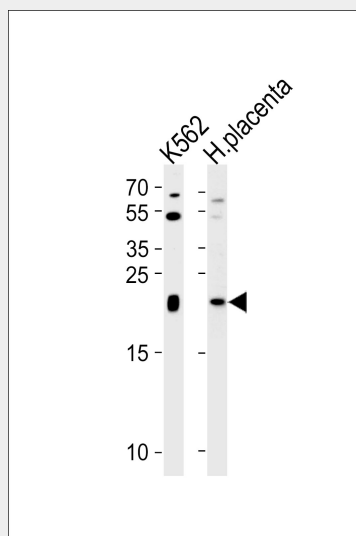
Detected at low levels in testis, bone marrow, skeletal muscle, kidney, colon, thymus, small intestine and trachea

### IL31 Antibody (N-term) - Protocols

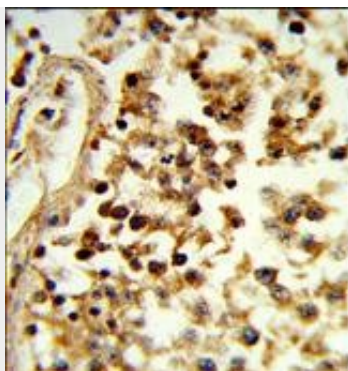
Provided below are standard protocols that you may find useful for product applications.

- [Western Blot](#)
- [Blocking Peptides](#)
- [Dot Blot](#)
- [Immunohistochemistry](#)
- [Immunofluorescence](#)
- [Immunoprecipitation](#)
- [Flow Cytometry](#)
- [Cell Culture](#)

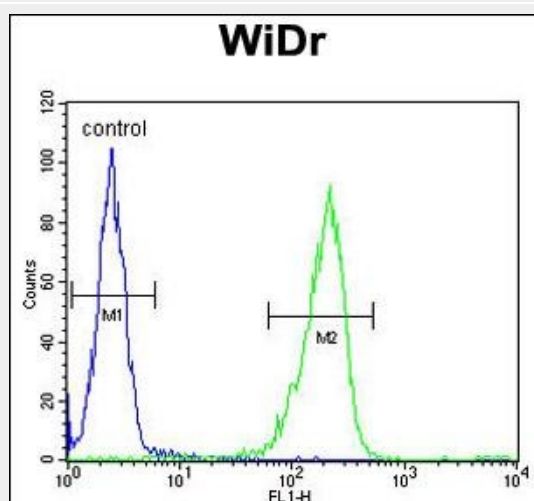
### IL31 Antibody (N-term) - Images



Western blot analysis of lysates from K562 cell line and human placenta tissue lysate (from left to right), using IL31 Antibody (N-term)(Cat. #AP9388a). AP9388a was diluted at 1:1000 at each lane. A goat anti-rabbit IgG H&L(HRP) at 1:5000 dilution was used as the secondary antibody. Lysates at 35ug per lane.



Formalin-fixed and paraffin-embedded human testis tissue reacted with IL31 Antibody (N-term), which was peroxidase-conjugated to the secondary antibody, followed by DAB staining. This data demonstrates the use of this antibody for immunohistochemistry; clinical relevance has not been evaluated.



IL31 Antibody (N-term) (Cat. #AP9388a) flow cytometric analysis of WiDr cells (right histogram) compared to a negative control (left histogram). FITC-conjugated goat-anti-rabbit secondary antibodies were used for the analysis.

### IL31 Antibody (N-term) - Background

IL31, which is made principally by activated Th2-type T cells, interacts with a heterodimeric receptor consisting of IL31RA (MIM 609510) and OSMR (MIM 601743) that is constitutively expressed on epithelial cells and keratinocytes. IL31 may be involved in the promotion of allergic skin disorders and in regulating other allergic diseases, such as asthma.

### IL31 Antibody (N-term) - References

Le Saux, S., et al. J. Biol. Chem. 285(5):3470-3477(2010) Zucchelli, M., et al. Inflamm. Bowel Dis. 15(7):961-962(2009) Gutzmer, R., et al. J. Allergy Clin. Immunol. 123(3):619-625(2009) Zhang, Q., et al. Cytokine Growth Factor Rev. 19 (5-6), 347-356 (2008) : Werfel, T., et al. Chem Immunol Allergy 94, 101-111 (2008) :